

# Cundeelee Wangka



Wangka kanyira ngalipirniku  
PRESERVING OUR LANGUAGES FOR ALL OF US

## Alphabet Chart

a



tjamu  
grandfather

aa



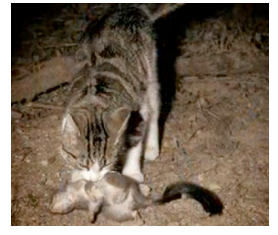
kaarnka  
crow

i



impu  
spider

ii



wiika  
wild cat

k



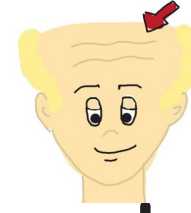
kapi  
water

l



lirru  
snake

ly



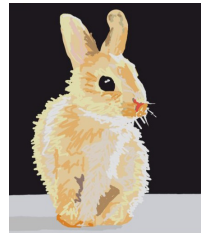
ngalya  
forehead

m



mara  
hand

n



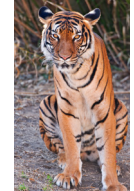
nani  
rabbit

ng



ngukurn  
egg

ny



nyina  
sit

p



parna  
earth

r



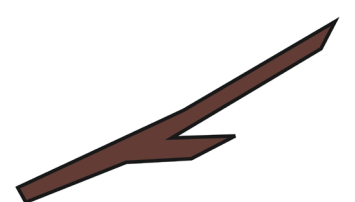
runkarnu  
striking

rl



marlu  
kangaroo

rn



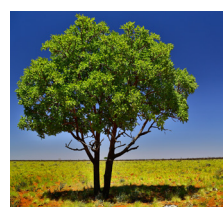
purnu  
stick

rr



wirra  
coolamon

rt



warta  
tree

t



tari  
ankle

tj



tjitji  
child

u



kuka  
meat

uu



yuu  
windbreak

w



waru  
fire

y



yapu  
rock